

Black and tan (1909)

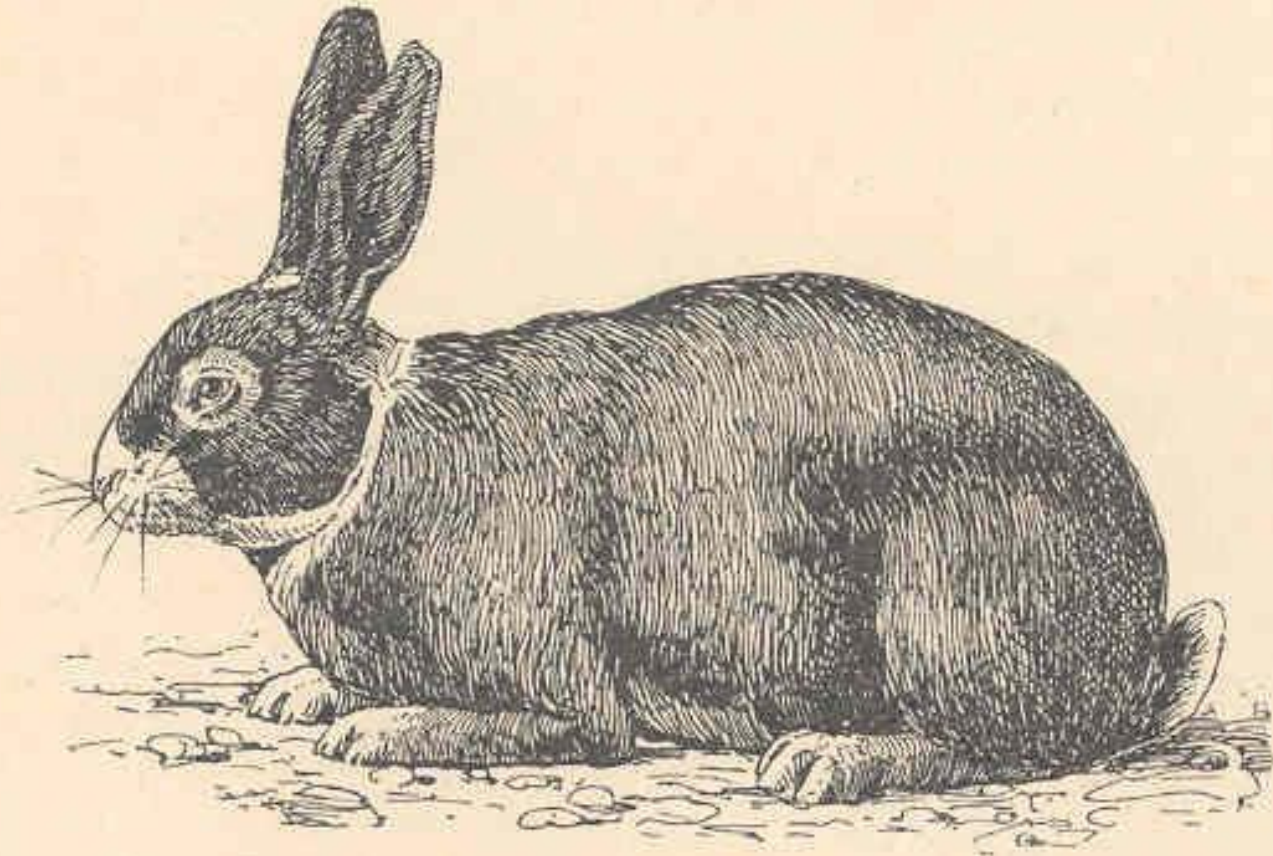


Abb. 19. Black and tan-Kaninchen.

Elterntiere





... „Decken“











...beim „Nesten“













... Das Nest ist bereit



... Nachwuchs





































... werden
und
wachsen

























... im Spätsommer























... schon bald gross









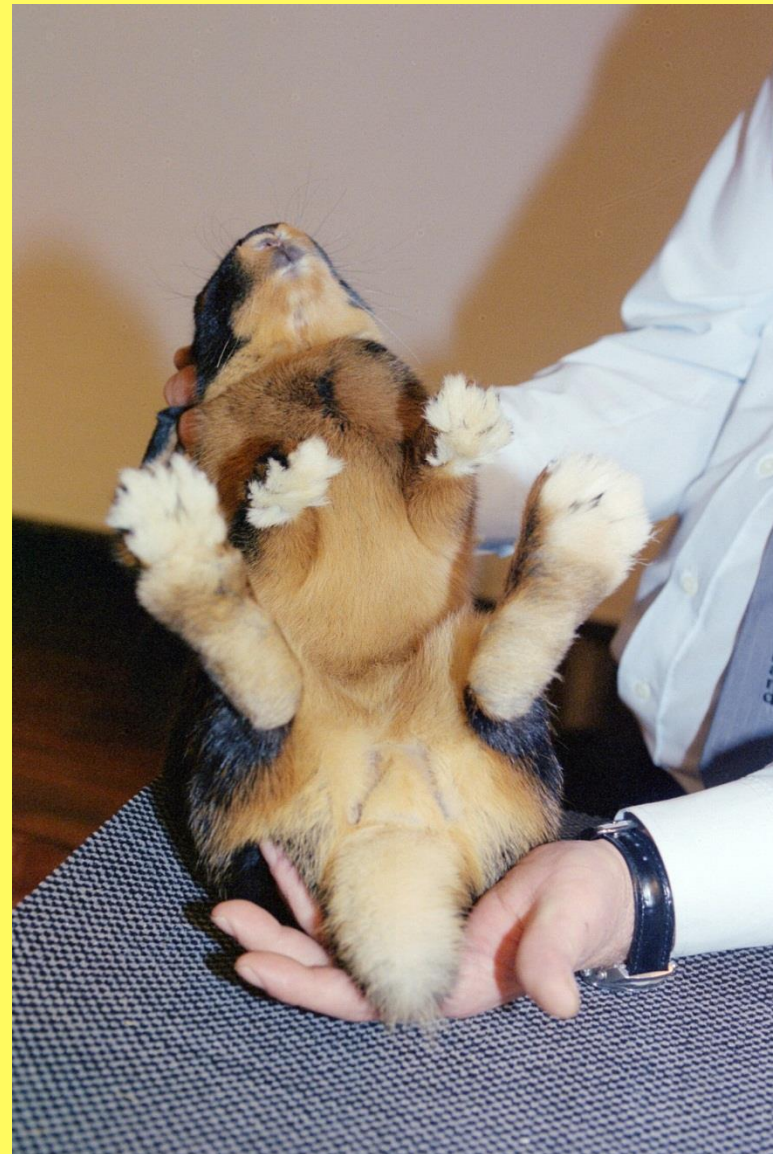






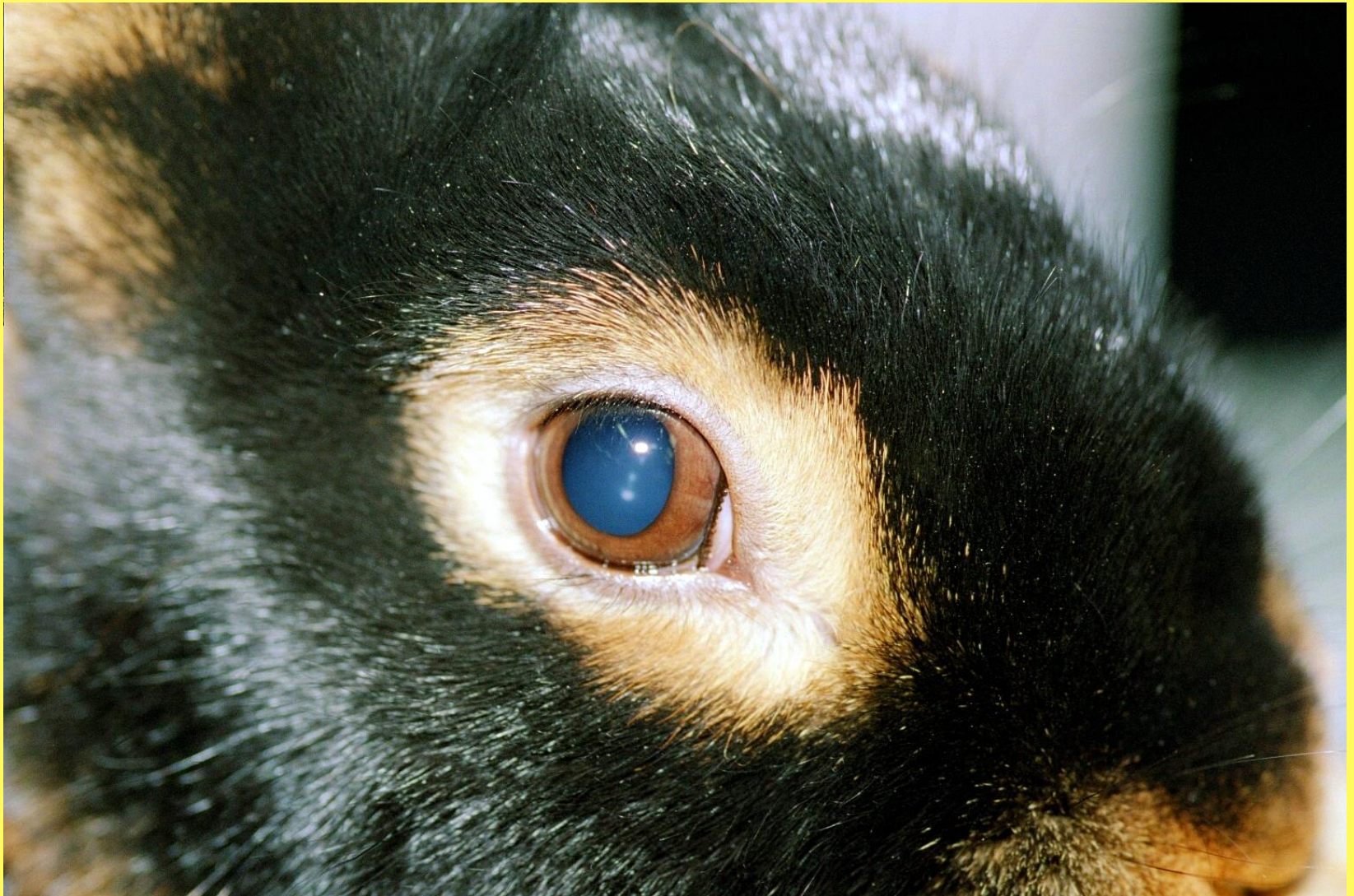


Lohmerkmale

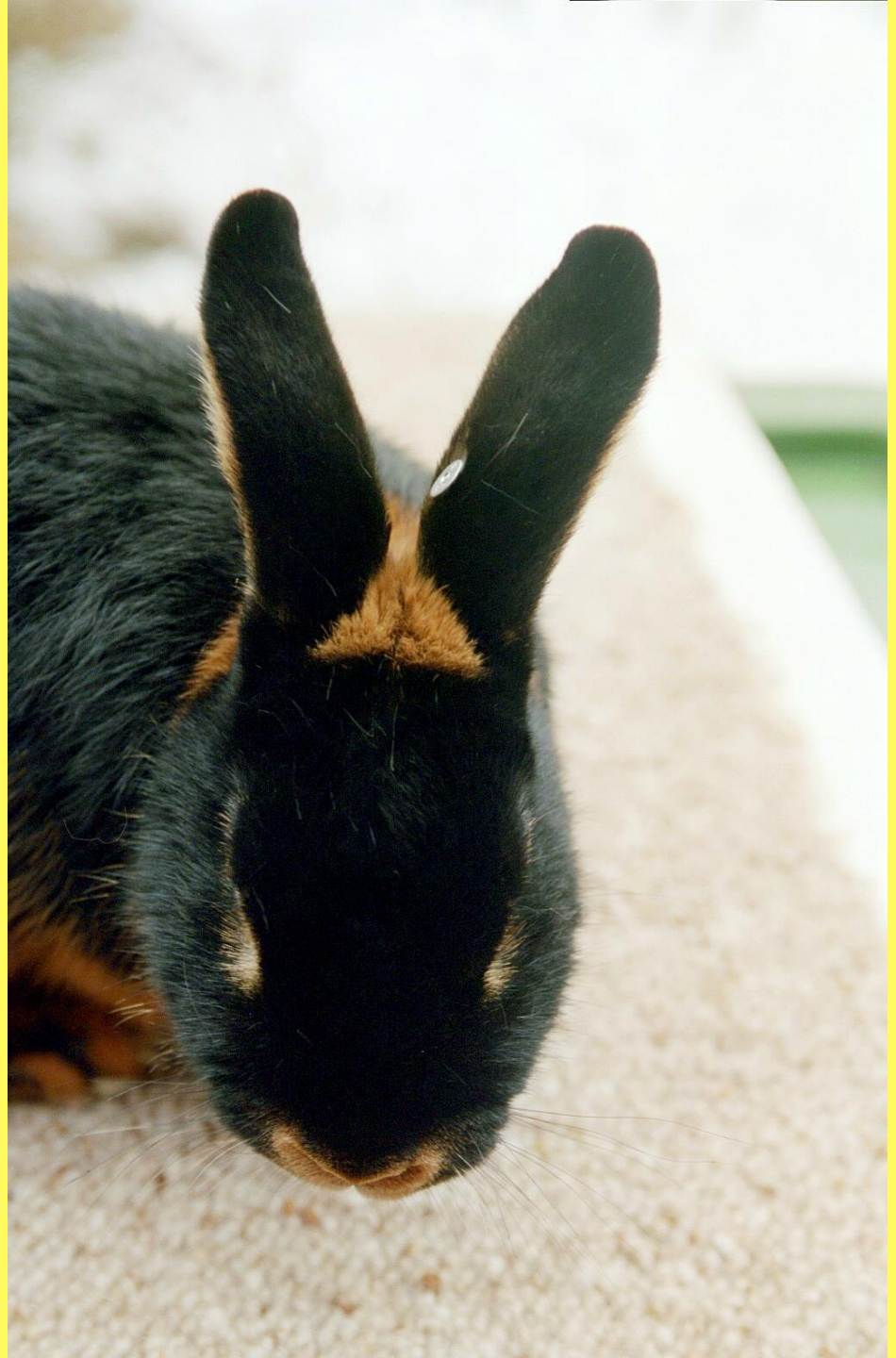




... Augenring



... Krönli



... Stiefeli



... gut
behaarte
Ohren





... Keil





Grannenflor





... Fehlerhaftes



Er und Sie



Farbenschläge

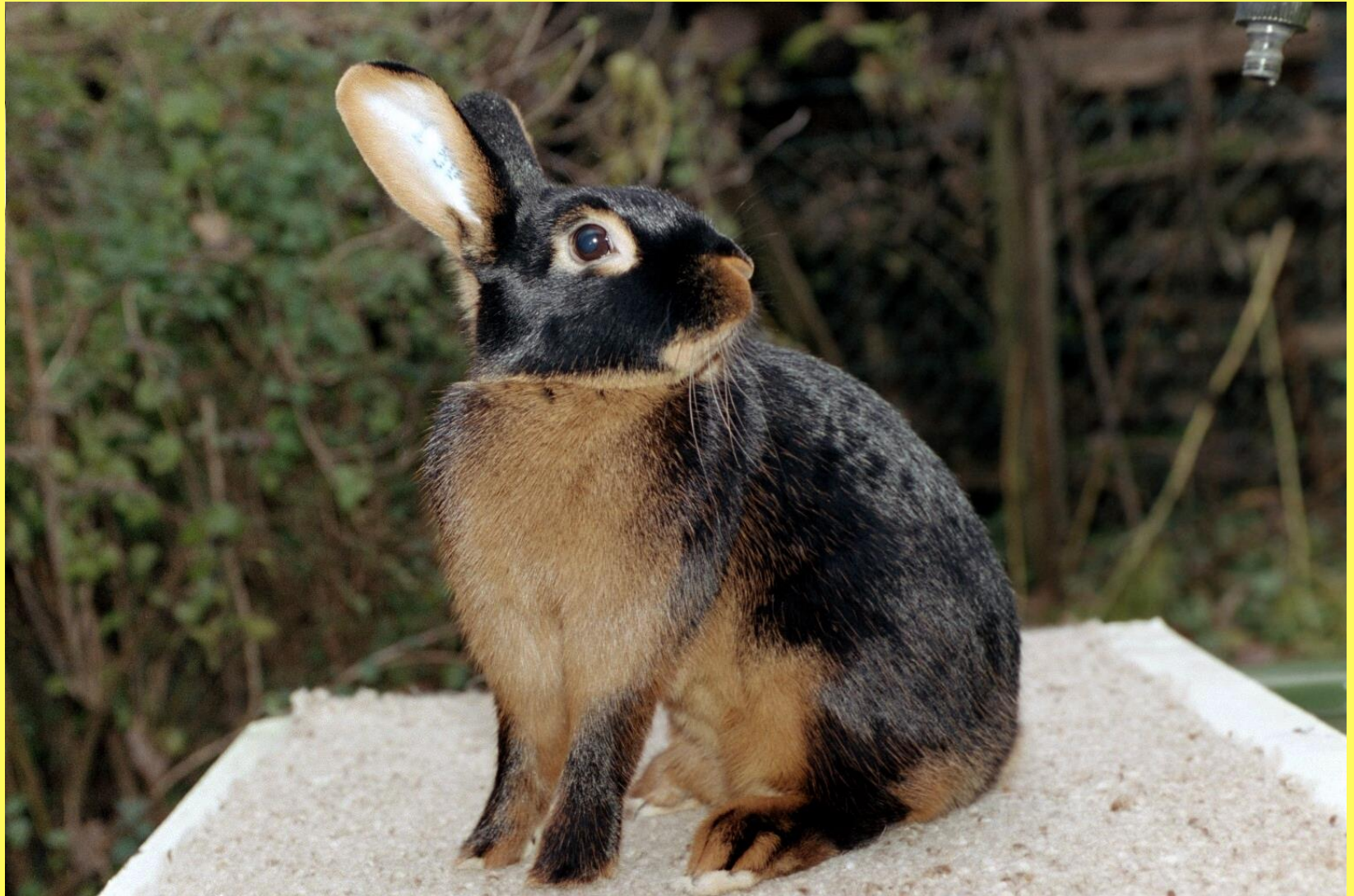














... an der Ausstellung









Black and tan

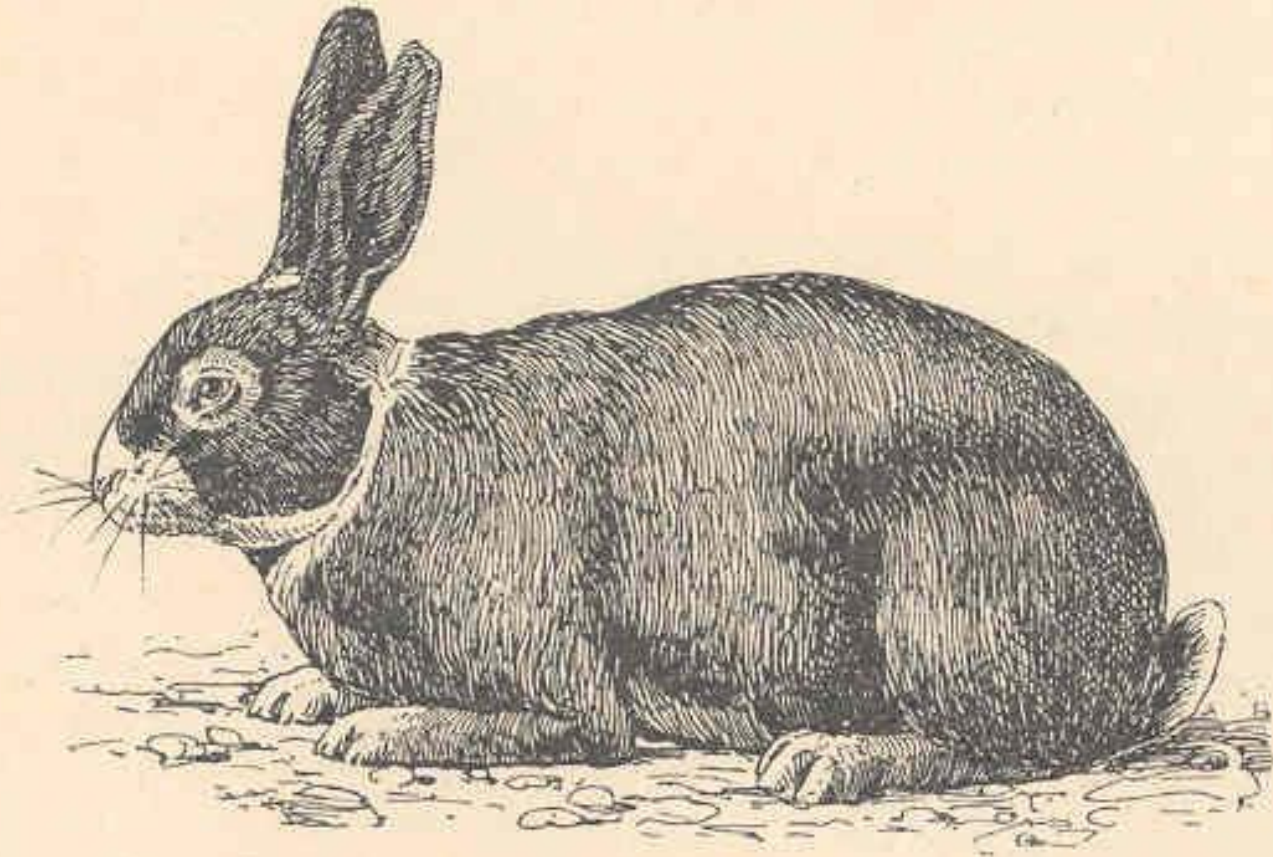


Abb. 19. Black and tan-Kaninchen.